

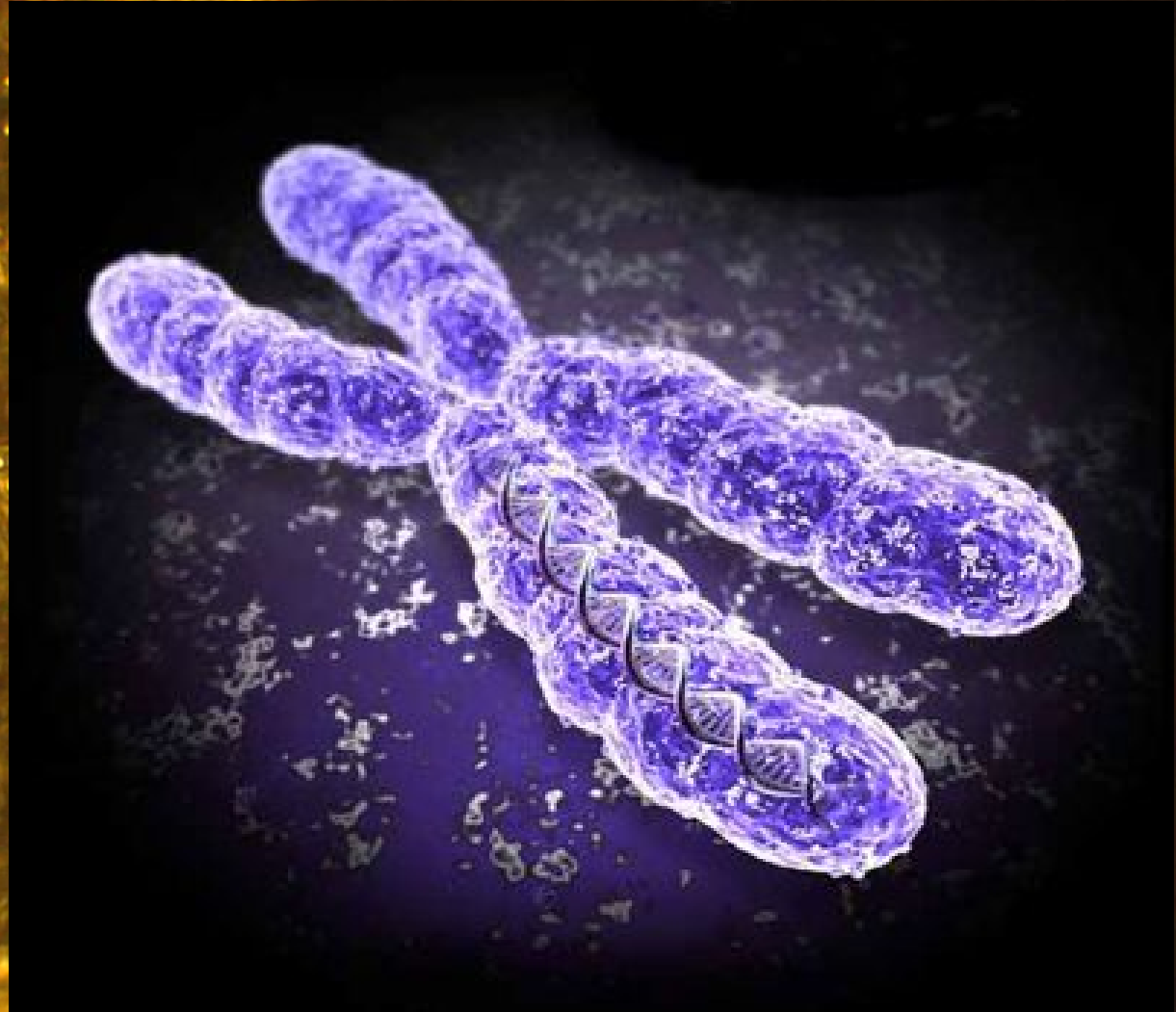
A high-magnification micrograph of a cell, likely a plant cell, showing a large, roughly rectangular nucleus. Inside the nucleus, a prominent, circular nucleolus is visible. The cytoplasm is filled with various organelles and structures, including smaller nuclei and granules. The overall appearance is golden-brown, suggesting a specific staining technique.

# Nucleolus

By Ace, Yining, & Gail

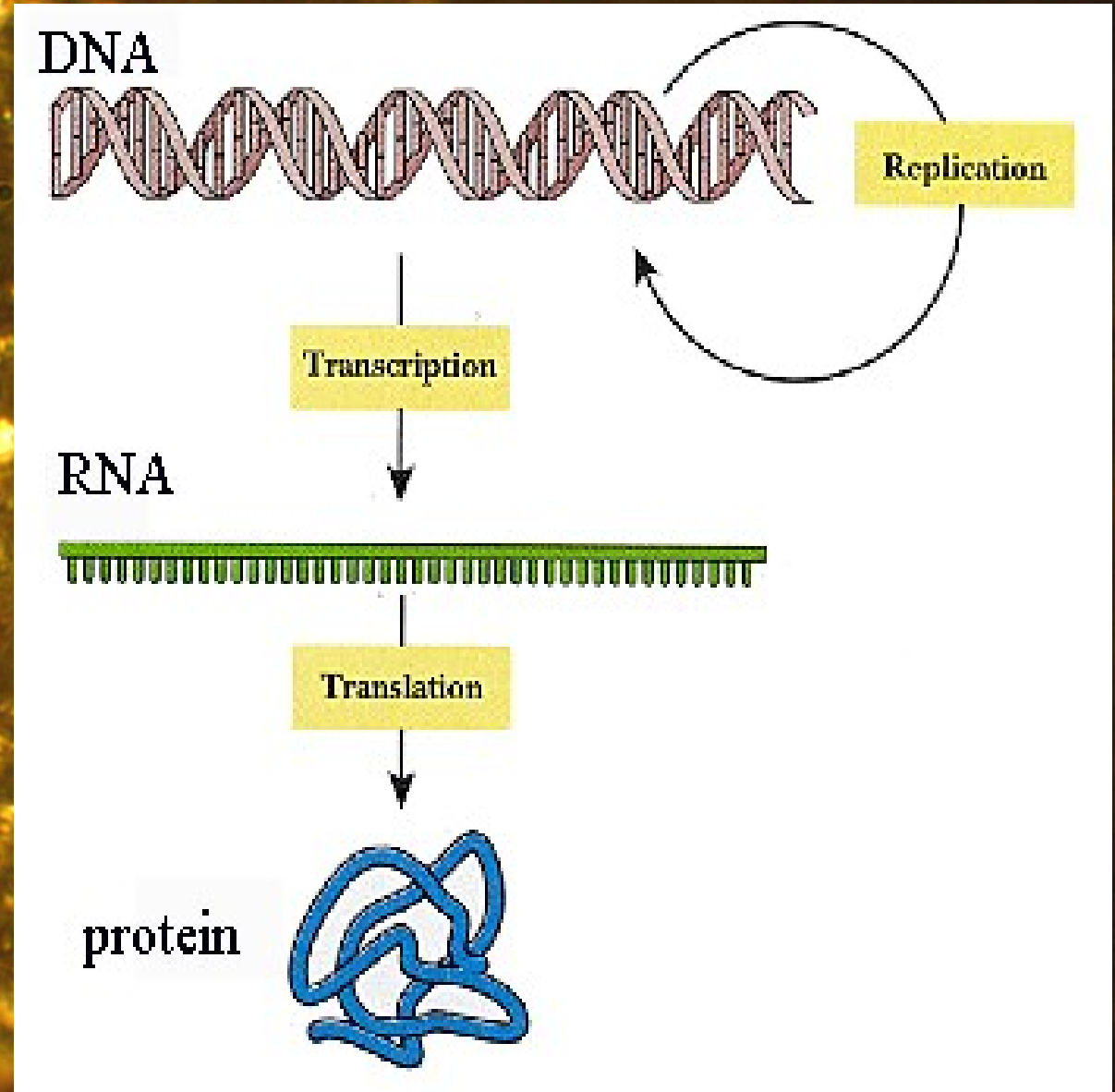
# Function

- Ribosome production
- Chromatids
- Regulator



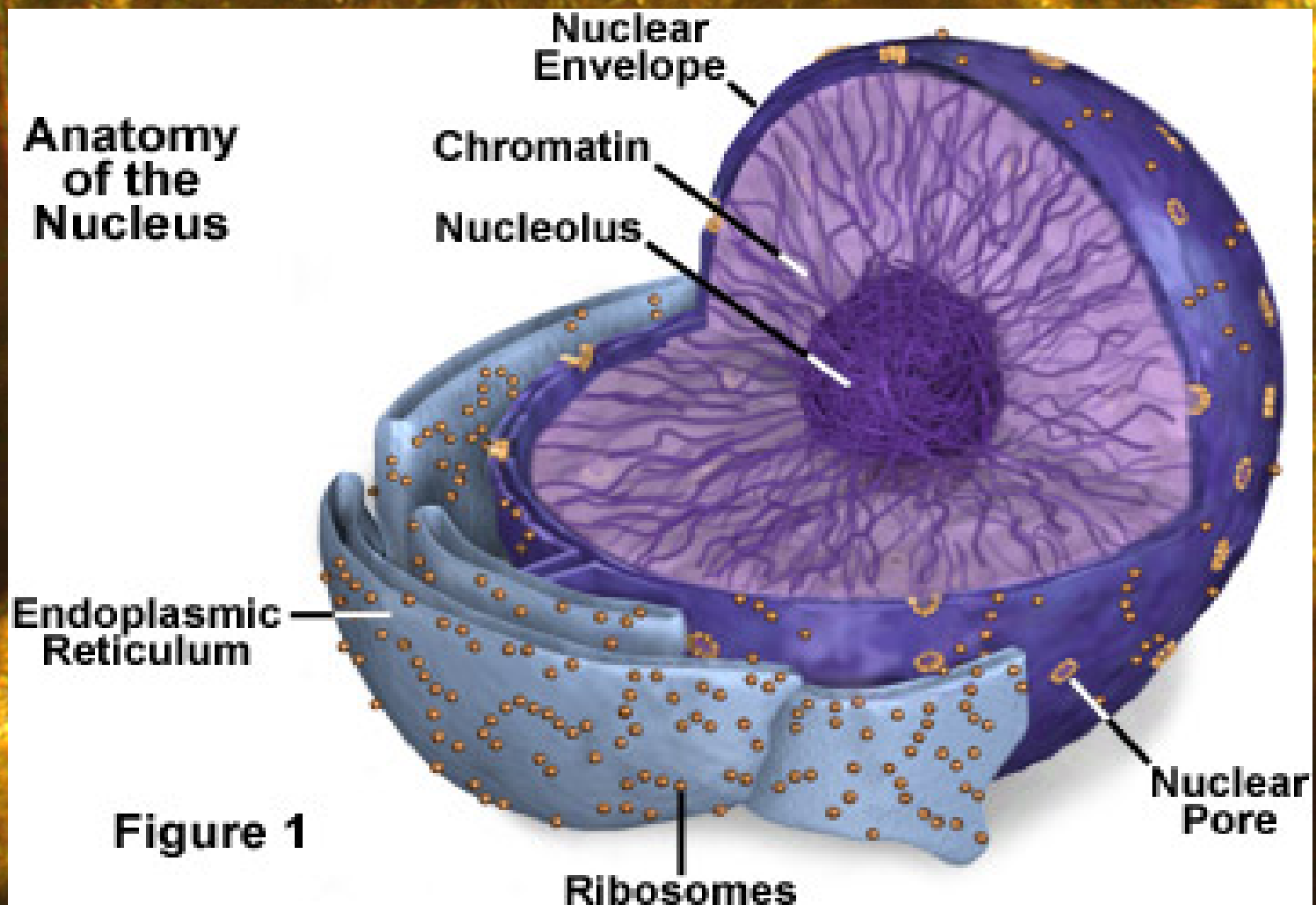
# Structure

- Protruding
- Dense
- DNA, RNA
- No membrane



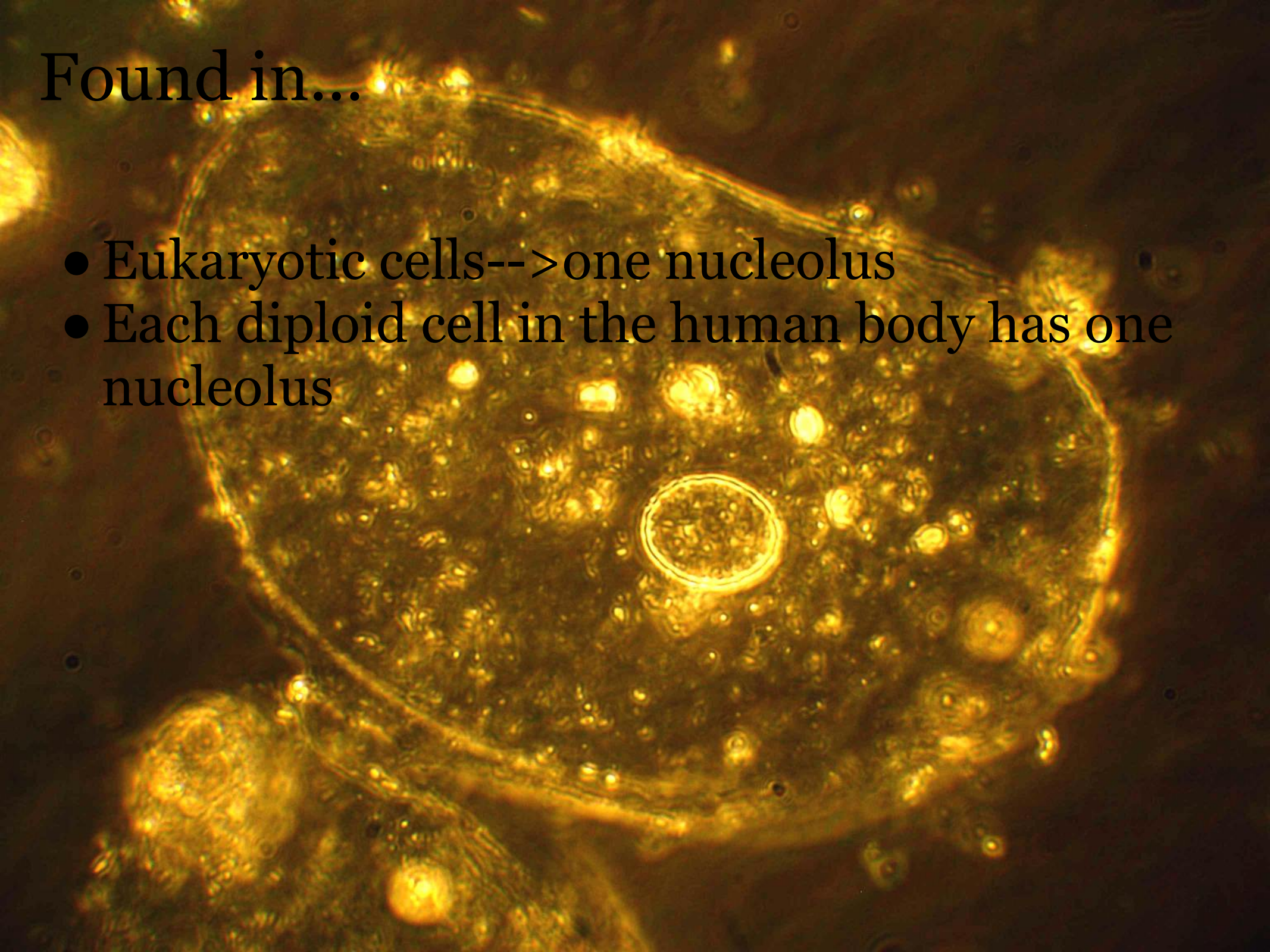
# Location

- Within the nucleus



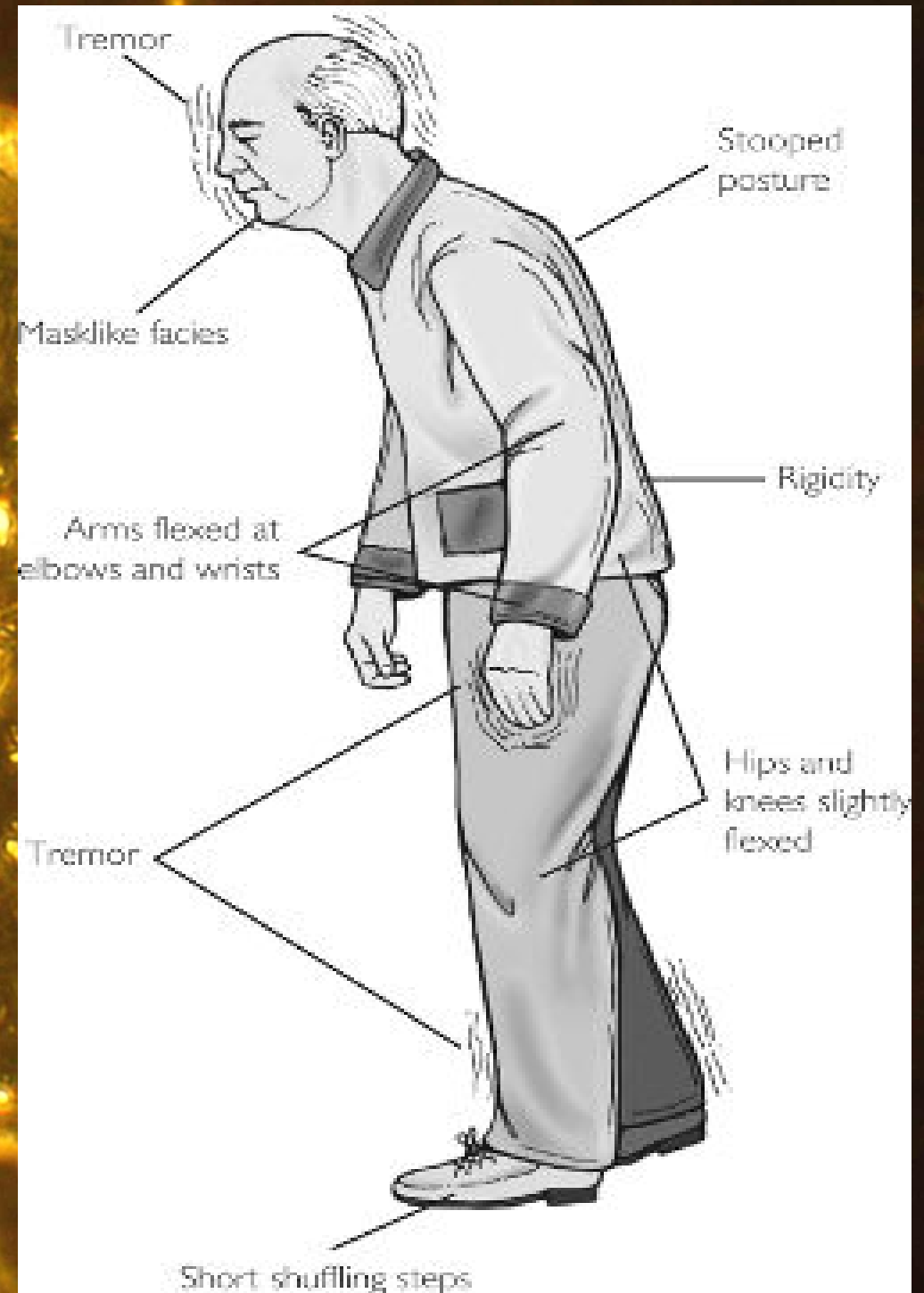
Found in...

- Eukaryotic cells-->one nucleolus
- Each diploid cell in the human body has one nucleolus



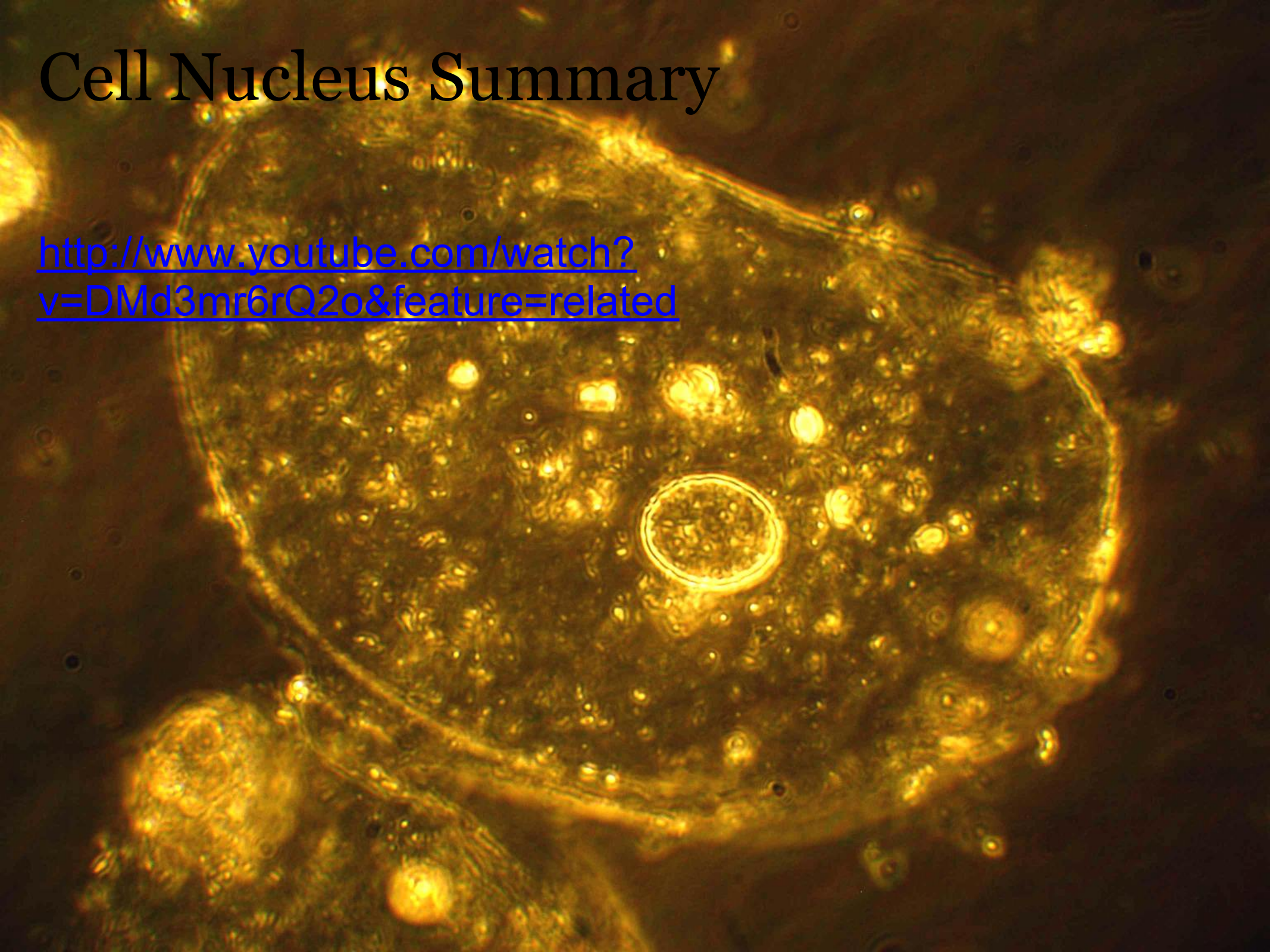
# Disease

- Parkinson's Disease--> defective nucleoli
  - Oxidative Stress-imbalance of  $O_2$ 
    - detoxify and repair



# Cell Nucleus Summary

<http://www.youtube.com/watch?v=DMd3mr6rQ2o&feature=related>



# Bibliography



- 1) "Nucleolus Function." *Nucleusfunction.com*. N.p., 2011. Web. Oct. & Nov. 2011. <<http://www.nucleolusfunction.com/>>.
- 2) N.p., n.d. Web. Oct. & Nov. 2011. <<http://middletownhighschool.wikispaces.com/file/view/nucleus4.jpg/173544929/nucleus4.jpg>>.
- 3) N.p., n.d. Web. Oct. & Nov. 2011. <<http://www.cytochemistry.net/cell-biology/DNA-RNA.jpg>>.
- 4) "Oxidative Stress, Defective Nucleoli Likely a Cause of Parkinson's Disease." *Neuroscience News*. Corticom, 2011. Web. Oct. & Nov. 2011. <<http://neurosciencenews.com/oxidative-stress-defective-nucleoli-cause-parkinsons-disease-mtor/>>.
- 5) "The Nucleus and Nucleolus." *Cells Alive!*. N.p., n.d. Web. Oct. & Nov. 2011. <<http://www.cellsalive.com/cells/nucleus.htm>>.
- 6) N.p., n.d. Web. Oct. & Nov. 2011. <<http://www.science3pointo.com/genegeek/files/2010/11/chromosome.jpg>>.

6

6)